

Girl Scout Cookie Drive-thru Booth Configuration Ideas

"U" shape configuration

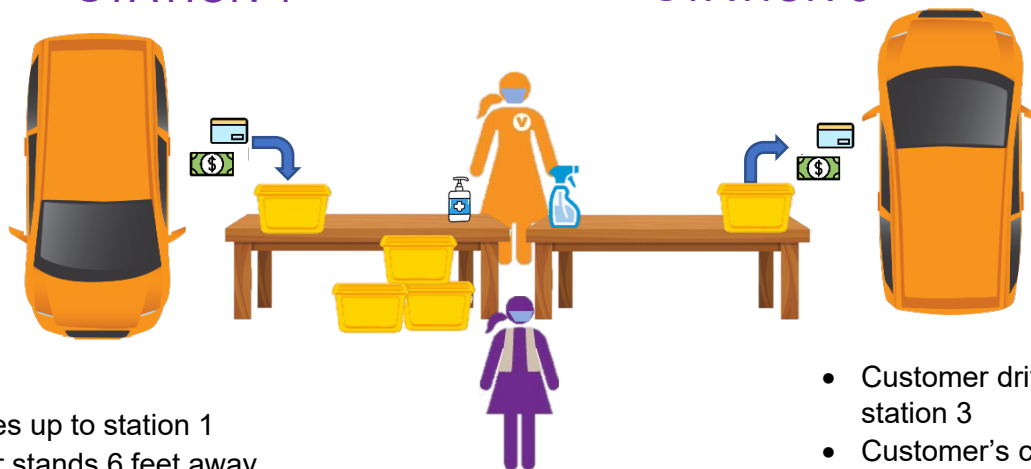
- At least 2 adult volunteers and 2 Girl Scouts.

ENTER

STATION 1

STATION 3

EXIT

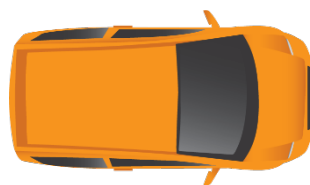


- Customer drives up to station 1
- Adult volunteer stands 6 feet away from car and takes cookie order
- Volunteer lets Girl Scout know what cookies to have ready at station 2
- Customer utilizes basket at end of table to deposit payment method
- Volunteer asks customer to roll up window while grabbing basket with payment
- Volunteer processes payment and returns change/credit card back to basket at end of table of station 3

- Customer drives up to station 3
- Customer's change/credit card is returned at this station
- After basket is empty and customer drives away, basket is to be sanitized



STATION 2



Customer drives up to station 2
 Girl Scout will get order ready and place on table
 Customer is asked to open back seat or trunk of car
 Volunteer take order from table and deposits into back of vehicle and sends customer to station 3